

# Leicestershire Social Care Development Group

## Training & Support For PVI Sector



# Leicestershire Social Care Development Group

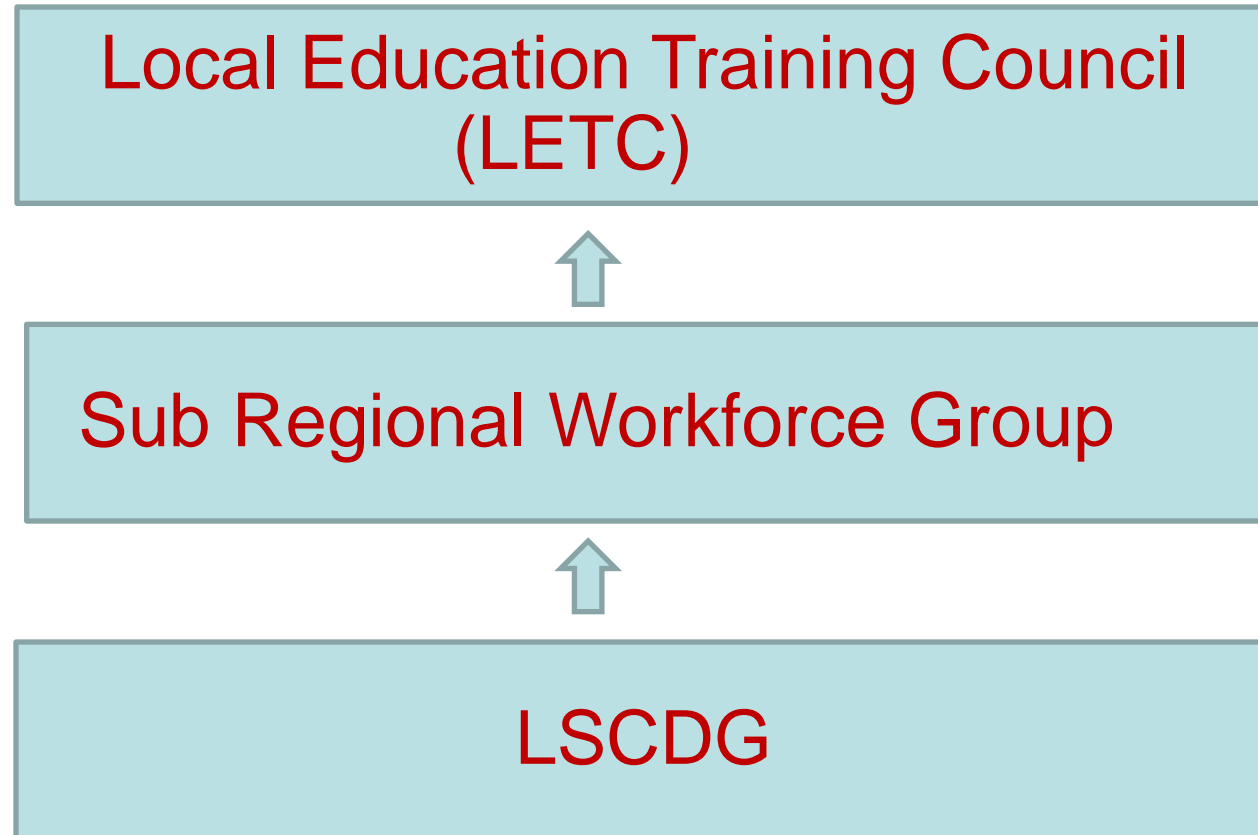
Legal Partnership that involves the following

- Existence since 2006

## **Sub Regional Workforce Group**

- Leicestershire County Council (LP)
- Leicester City Council (LP)
- Rutland CC (NLP)
- Skills for Care (SfC)
- EMCARE – Private Sector (East Midlands Combined Association of Residential Establishments)
- VISTA – Voluntary Sector
- Domiciliary Sector
- Health

# Leicestershire Social Care Development Group



# Leicestershire Social Care Development Group

**AIM: Support workforce development and raise quality for independent and voluntary sector, adult social care across Leicester and Leicestershire, Rutland**

- Part Funded Training Programme
- Funding
  - Workforce Development Fund [www.skillsforcare.org.uk](http://www.skillsforcare.org.uk)
- Free On line Resources
  - Scils (Social Care Information & Learning Services) [www.scils.co.uk](http://www.scils.co.uk)
  - E-Learning <http://lscdg.learningpool.com>
- One Off Events
- LSCDG is part of East Midlands Core Network (SfC)
- LSCDG website [www.lscdg.org](http://www.lscdg.org)

# Leicestershire Social Care Development Group

## Statistics

- **2015/16 (April 2015 to Feb 2016)**
- 114 Training Sessions Delivered
- 1565 Staff Trained
- 868 Accessed by Providers

(400 + Providers across LLR as per Care Directory)

# Leicestershire Social Care Development Group

## Examples of training available to PVI Care Providers

- Moving & Handling Trainer the Trainer (3 days)
- Safeguarding Adults Training the Trainer ( 2 days)
- Mental Capacity Act & Deprivation of Liberty Safeguarding Training
- Dementia Education Programme (3 Tiers)
- Autism Programme (3 Tiers)
- Leadership & Management LD (Winterbourne Review)
- Leadership (Generic)
- Dignity in Care Train The Trainer ( 2 day)
- Signalong (2 days)
- Memory Plus (Year Long)
- Care Certificate Workshops (Half Day Sessions)

# Leicestershire Social Care Development Group

## Training

What does it cost?

- Some Courses Fully Funded (Autism, Dementia, Safeguarding TtT, Moving & Handling TtT)
- £30 per course (invoiced after the event).
- Non attendance £100 per day
- No Lunches provided, refreshments are included
- [www.lscdg.org](http://www.lscdg.org) – on line booking

# Leicestershire Social Care Development Group

## Funding

- Workforce Development Fund
  - Qualifications Credit Framework (QCF)
  - Completion of national minimum data set social care (nmnds-sc)
  - Can claim £15 per credit
  - Since 2006 LSCDG have met 100% of contract
  - [www.skillsforcare.org.uk](http://www.skillsforcare.org.uk)



# Leicestershire Social Care Development Group

- Engagement with Care Providers (Relationship)

## How does this happen?

- Website
- Training Courses
- Events (both ways)
- Referral via compliance (city & county)
- Word of mouth
- Other sources

# Leicestershire Social Care Development Group

## Who ?

- Owners
- Manager/Senior Staff /Training Co-ordinator
- Health
- CCG's
- Local Colleges
- Training Providers
- Other Departments/LA's, Organisations

# Leicestershire Social Care Development Group

## How & What

- Care Provider Settings/County Hall, Other
- Resources available (information pack – use website – Lap Top/PC -)
- Conversation (two way process)
- Can you show me...
- How do you source...
- How many staff...
- Building a picture

# Leicestershire Social Care Development Group

## Feelings Matter Most



# Leicestershire Social Care Development Group

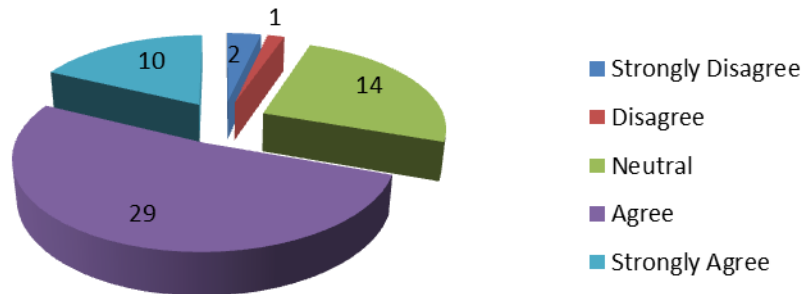
- MCA/Dols Conference



# Leicestershire Social Care Development Group

- **Care Summit**
- 124 Delegates
  - 79 PVI
  - 35 LA
  - 10 Health

**Identify ways in which you can support your organisation with the implementation of the Care Act**



# Leicestershire Social Care Development Group

- Careers In Health & Social Care



# Leicestershire Social Care Development Group

- Sub Regional Workforce Group

## Engagement with Health

- LETC Workforce Stream (Monthly)
- LETC Finance Task & Finish Group (Quarterly)
- LETC Wider Workforce Development Group (Bi-Monthly)
- LETC Future Education Sub Group



# Leicestershire Social Care Development Group

## Working with Health

- Better Care Together Programme
- Leadership Pilot Programme (2 cohorts)
- Recruitment & Retention Issues in Dom Care Sector & other areas
- Care Certificate
- Health & Social Care Protocol
- And more.....

# Leicestershire Social Care Development Group

## Summary

- Successful Partnership
- Multi Agency work via LSCDG
- Working with Providers
- Working with Health
- Working with CCG's

## Next Steps

- To work with other partnership's
- To work with other LA's

# Leicestershire Social Care Development Group

- Any Questions?
- [www.lscdg.org](http://www.lscdg.org)
- [lscdg@leics.gov.uk](mailto:lscdg@leics.gov.uk)

# Leicestershire Social Care Development Group

## Contact details

- Nazir Hussein – Business & Development Manager
- [Nazir.hussein@leics.gov.uk](mailto:Nazir.hussein@leics.gov.uk)
- Tel: 0116 305 7363
  
- Hansa Kanji – Business Support Assistant
- [Hansa.kanji@leics.gov.uk](mailto:Hansa.kanji@leics.gov.uk)
- Tel: 0116 305 7438
  
- Sabina Sidat – Business Support Assistant
- [Sabina.sidat@leics.gov.uk](mailto:Sabina.sidat@leics.gov.uk)
- Tel: 0116 305 5185